

N.E. 1/4, OF SECTION 18, T.6N., R.1W., S.L.B. & M.

IN OGDEN CITY
SCALE 1" = 200'

NOTE: P. 95 OMITTED

TAXING UNIT: 25, 359

SEE BOOK 11 PAGE 25

OGDEN CITY CORP
(120940058)
13,782 SQ FT
TU: 25

SEE P. 94

DDO ECONOMIC DEV. PROJECT AREA
N3°51'15"W DEED=4067.37'

RANDY WILLIAMS
OPHEIKENS
(120940020)
12822 SQ.FT.
TU: 25

RANDY W OPHEIKENS
& WF PAMELA K
120940037
16,621 SQ FT± TU: 25

STATE ROAD COMM STATE ROAD COMM STATE ROAD COMM
120940008 120940006 120940002
STATE ROAD COMM STATE ROAD COMM STATE ROAD COMM
120940015 120940014 120940014

STATE ROAD COMM STATE ROAD COMM STATE ROAD COMM
120940016 120940013 120940038
STATE ROAD COMM STATE ROAD COMM STATE ROAD COMM
120940016 120940013 120940035

STATE ROAD COMM STATE ROAD COMM STATE ROAD COMM
120940016 120940013 120940035
STATE ROAD COMM STATE ROAD COMM STATE ROAD COMM
120940016 120940013 120940035

STATE ROAD COMM STATE ROAD COMM STATE ROAD COMM
120940016 120940013 120940035
STATE ROAD COMM STATE ROAD COMM STATE ROAD COMM
120940016 120940013 120940035

STATE ROAD COMM STATE ROAD COMM STATE ROAD COMM
120940016 120940013 120940035
STATE ROAD COMM STATE ROAD COMM STATE ROAD COMM
120940016 120940013 120940035

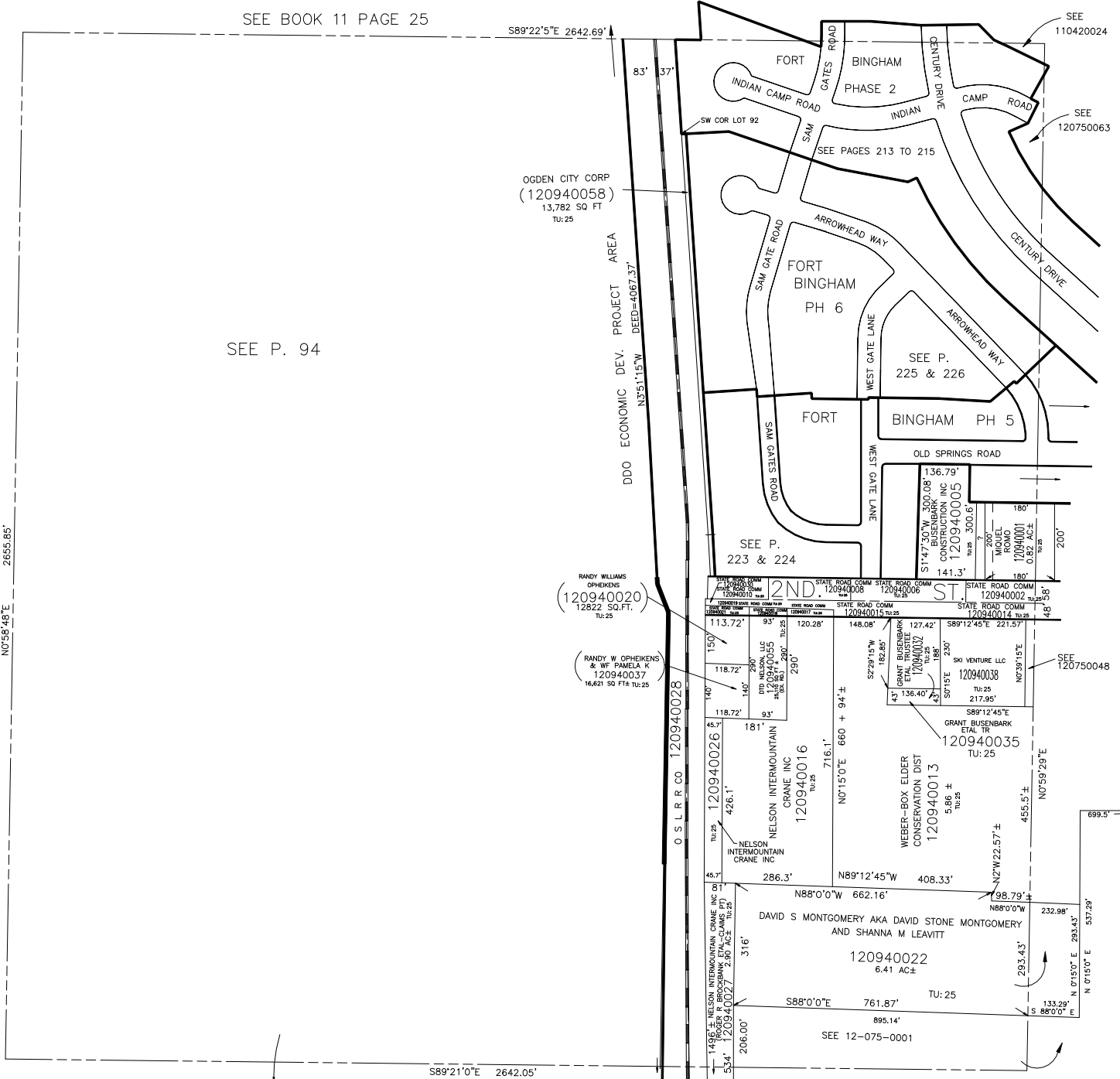
STATE ROAD COMM STATE ROAD COMM STATE ROAD COMM
120940016 120940013 120940035
STATE ROAD COMM STATE ROAD COMM STATE ROAD COMM
120940016 120940013 120940035

STATE ROAD COMM STATE ROAD COMM STATE ROAD COMM
120940016 120940013 120940035
STATE ROAD COMM STATE ROAD COMM STATE ROAD COMM
120940016 120940013 120940035

STATE ROAD COMM STATE ROAD COMM STATE ROAD COMM
120940016 120940013 120940035
STATE ROAD COMM STATE ROAD COMM STATE ROAD COMM
120940016 120940013 120940035

STATE ROAD COMM STATE ROAD COMM STATE ROAD COMM
120940016 120940013 120940035
STATE ROAD COMM STATE ROAD COMM STATE ROAD COMM
120940016 120940013 120940035

STATE ROAD COMM STATE ROAD COMM STATE ROAD COMM
120940016 120940013 120940035
STATE ROAD COMM STATE ROAD COMM STATE ROAD COMM
120940016 120940013 120940035



SEE PAGE 96